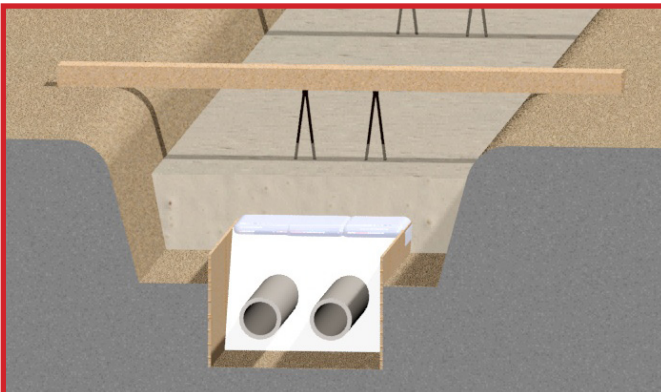
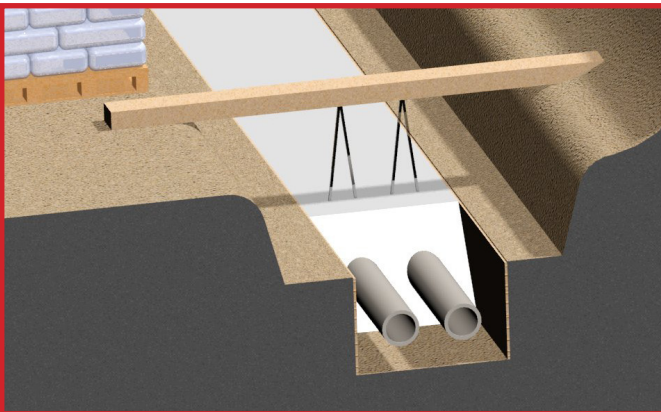
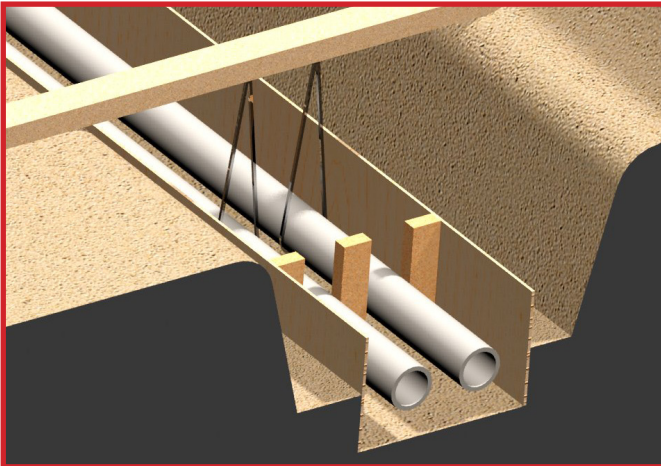
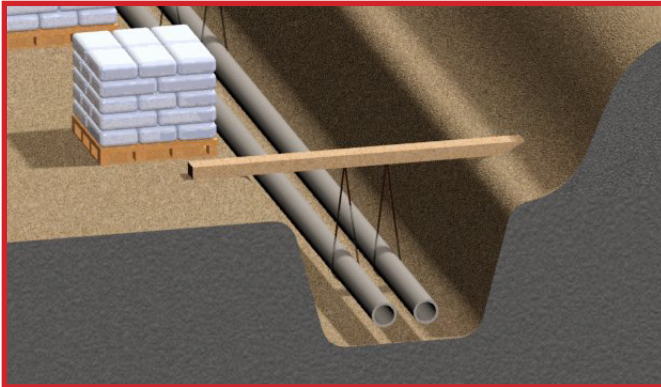


# DRITHERM™ INSTALLATION SHEET



## **Preparation:**

1. Excavate to minimum trench dimensions according to factory recommended spacing table.
2. Ensure the trench is wide and deep enough in areas that require thermal cushioning.
3. Place excavated earth to one side of the trench leaving a clear work area the opposite side.
4. Install permanent anchors and guides as recommended by manufacturer.
5. Grade and compact trench base to ensure spacing between pipes and trench bottom will be consistent.
6. Hang pipes using wire, cable, or blocks. When using blocks place a least three layers of DriWrap™ between the pipe and the support blocks. Blocks may be left in the trench when isolating contact between block and pipe with DriWrap™.
7. When possible place the pipes to one side of the trench using the trench wall as a form for the DriTherm™ pour.
8. Inspect pipe seams and leak test system.
9. Install mineral fiber thermal cushion on elbows, Z bends, and expansion loops.
10. Verify pipe spacing using a wood gauge cut to the minimum DriTherm™ thickness. Spacing may be maintained using scrap wood or drywall shims.

## **Forming:**

1. Place drywall or wood forms as necessary to create a uniform trench maintaining minimum DriTherm™ thicknesses. Forms should be flared out and trenches made deeper to accommodate thermal cushions were necessary.
2. Use temporary shims to maintain spacing between the pipes and forms.
3. Backfill halfway up the side of the forms to hold them in place against temporary spacers.
4. Apply bitumastic or silicone grease to permanent supports and at the beginning and end of each run.

## **DriTherm™ Pour:**

1. Pour DriTherm™ filling the forms to minimum Z dimensions. You may place a mark on the form or use a dip stick to verify thickness.
2. Remove all temporary shims replacing DriTherm™ as necessary.
3. Level out the DriTherm™ pour and place 4 to 6 mil plastic sheeting over the DriTherm™.

## **Backfill:**

1. Place initial 6" of clean backfill carefully by hand or as close proximity to the top of the DriTherm™ as possible to reduce the impact from backfill on the product. Backfill should be free of large debris and stone.
2. Sand, crushed stone and pea gravel are not acceptable backfill materials.
3. Compact only after a minimum of 10-12 inches of clean backfill have been placed.
4. Remove temporary supports only after completing first compaction pass.
5. Complete backfill and compaction as required to finish grade (minimum of 18" of coverage over DriTherm™ is required).